



ORAL RECONSTRUCTION
FOUNDATION



—
**ASSISTANTS
WELCOME!**
7 CE CREDITS
—

PRF™: Techniques & Applications for Dental Implant Cases

DECEMBER 7, 2018 | **DR. BART SILVERMAN**

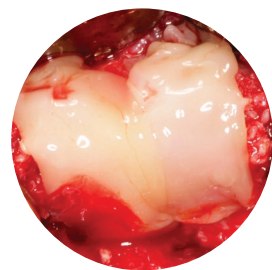
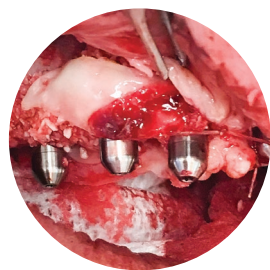
**BWS ORAL AND
MAXILLOFACIAL SURGERY
NEW CITY, NEW YORK**

PRF™: Techniques & Applications for Dental Implant Cases

This course is designed for specialists and general practitioners who are interested in enhancing their bone grafting technique, especially for dental implant cases. Platelet Rich Fibrin (PRF) is derived from a small sample of the patient's blood, taken at the point of care and processed to develop a fibrin clot. The fibrin clot is prepared into a membrane that is rich in platelets, growth factors and cytokines necessary to produce rapid healing and efficient regeneration.

This biomaterial is resilient, strong and pliable, making it easy to manipulate and receptive to suturing. It can be cut to size and is supple enough to adapt to many anatomical areas. It is adhesive in nature, making it an ideal carrier for bone graft material. Uses for the material include bulking graft material, replacing graft material, using it as a barrier membrane, placing it in extraction sites for increased healing, and using it in guided tissue regeneration procedures. It is also ideal for extraction/immediate placement cases.

In this course, you will learn the science behind PRF and how to incorporate it in your clinical practice. The hands-on training portion will teach you how to create the PRF membrane/plugs, and a live surgical procedure will demonstrate how PRF is easily incorporated into everyday practice.



Bart W. Silverman, DMD
Oral Maxillofacial Surgeon

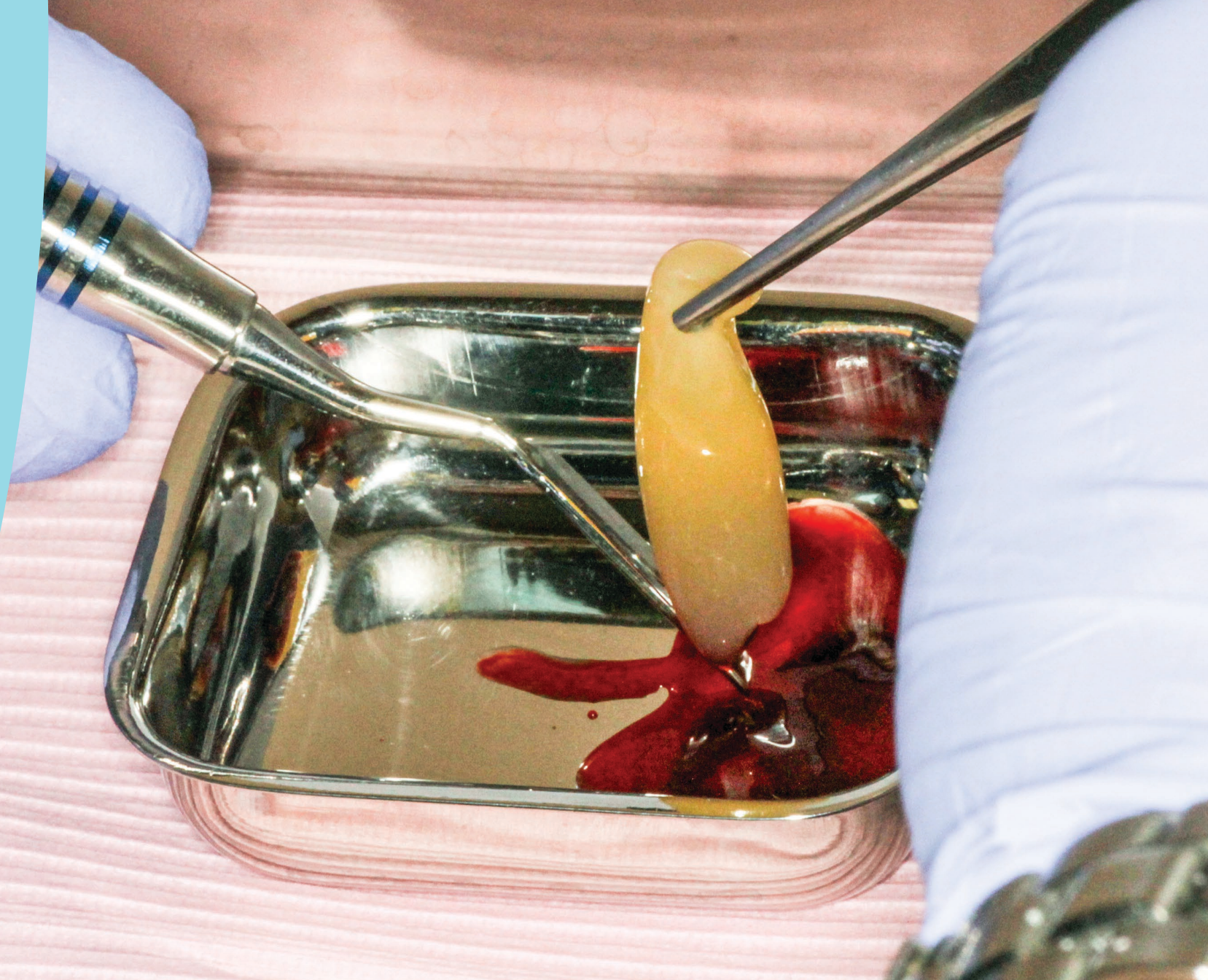
FRIDAY, DECEMBER 7, 2018
Registration 8:30am-9:00am
Lecture 9:00am-4:00pm
Continental breakfast & lunch provided

Assistants are encouraged to attend with their doctors.

BWS Oral & Maxillofacial Surgery
339 North Main Street, Suite 4
New City, NY 10956

7 CE Credit Hours
Tuition \$395
Assistant Tuition \$195

REGISTER ONLINE at
regonline.com/silvermanprf
or contact 205.986.7989



NONPROFIT ORG
US Postage
Paid
Birmingham, AL
Permit No. 915



Oral Reconstruction Foundation
2300 Riverchase Center
Birmingham, AL 35244



7 CE Credit Hours

Approved PACE Program Provider FAGD/MAGD credit. Approval does not imply acceptance by a state or provincial board of dentistry or AGD endorsement. 6/1/2016 to 5/31/2020. Provider ID# 219038.